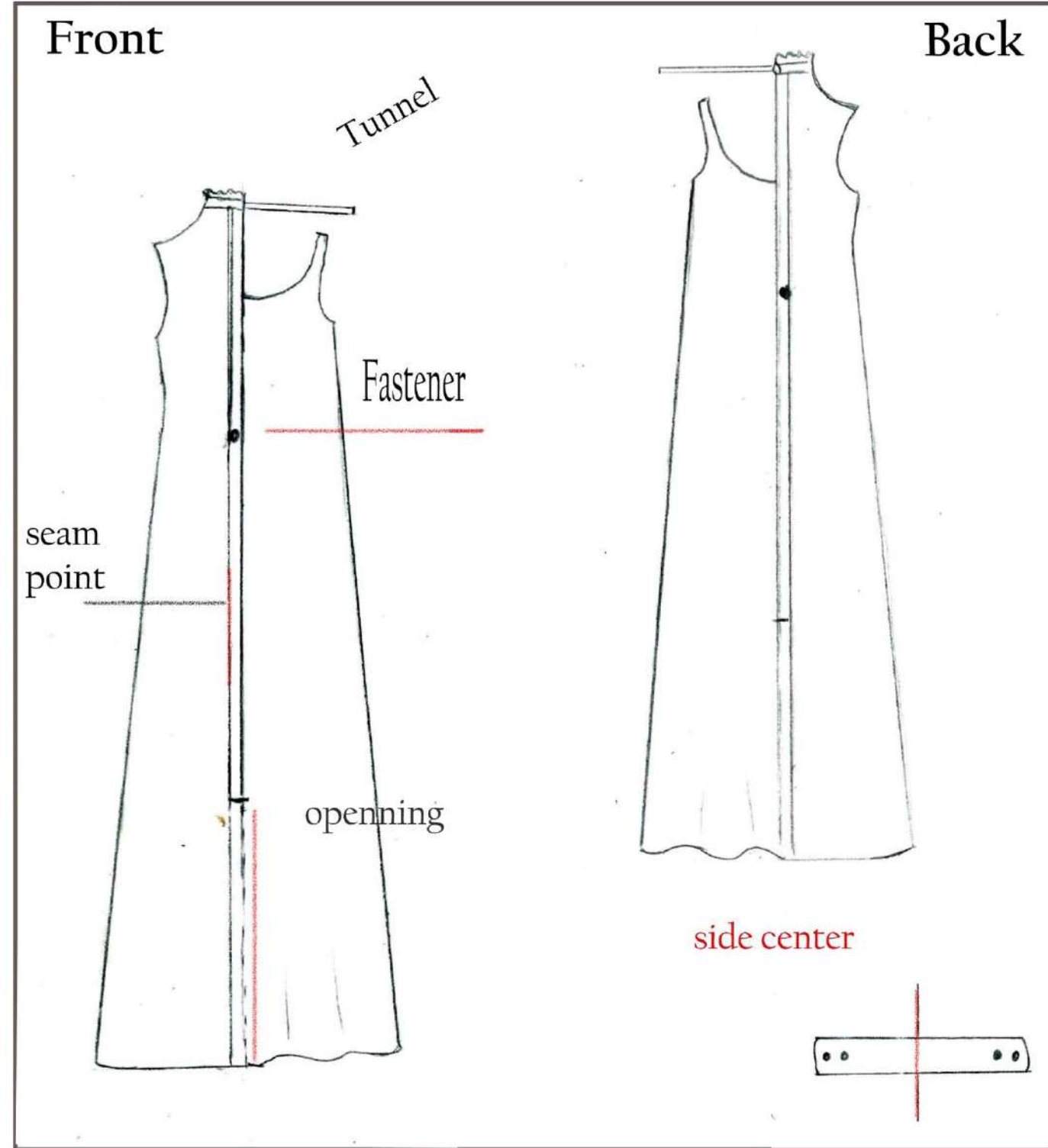




Style No : 001

Season : S / S' 22

Sheila Grimani



## Materials



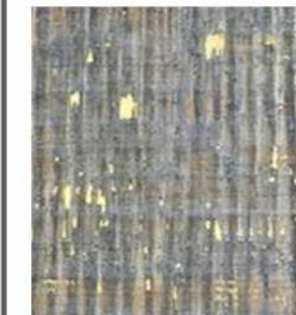
PANTONE  
7537C

55% CUPRO - 45% VISCOSE



PANTONE  
143C

74% TENCEL - 16% LINEN



PRINTED CORK



## Description

Maxi summer dress  
Tunnel on the neck with fabric cord 0.5 cm  
Fake flap longwise front and back  
Adaptable one side cork belt with metal fastener

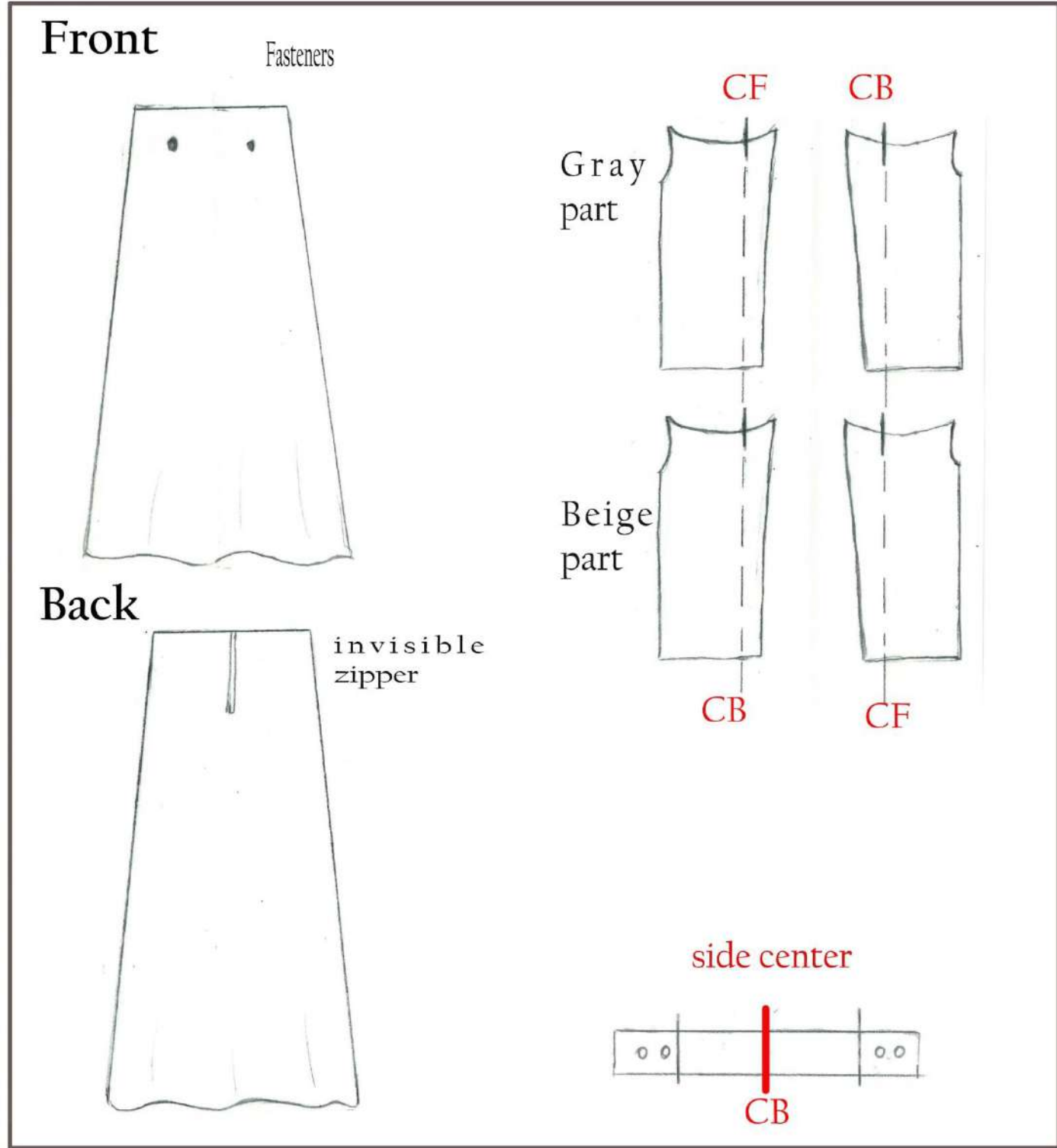
## Care instructions



Style No : 002

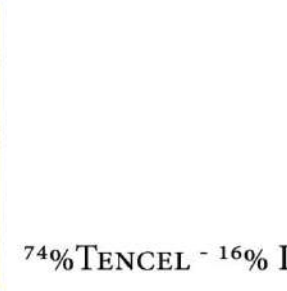
Season : S / S' 22

Sheila Grimani



## Materials

55% CUPRO - 45% VISCOSE



## Description

The top contains 2 individual parts, exactly the same so you can mix colors.  
Long midi skirt with adaptable cork belt adjusted with metallic fasteners

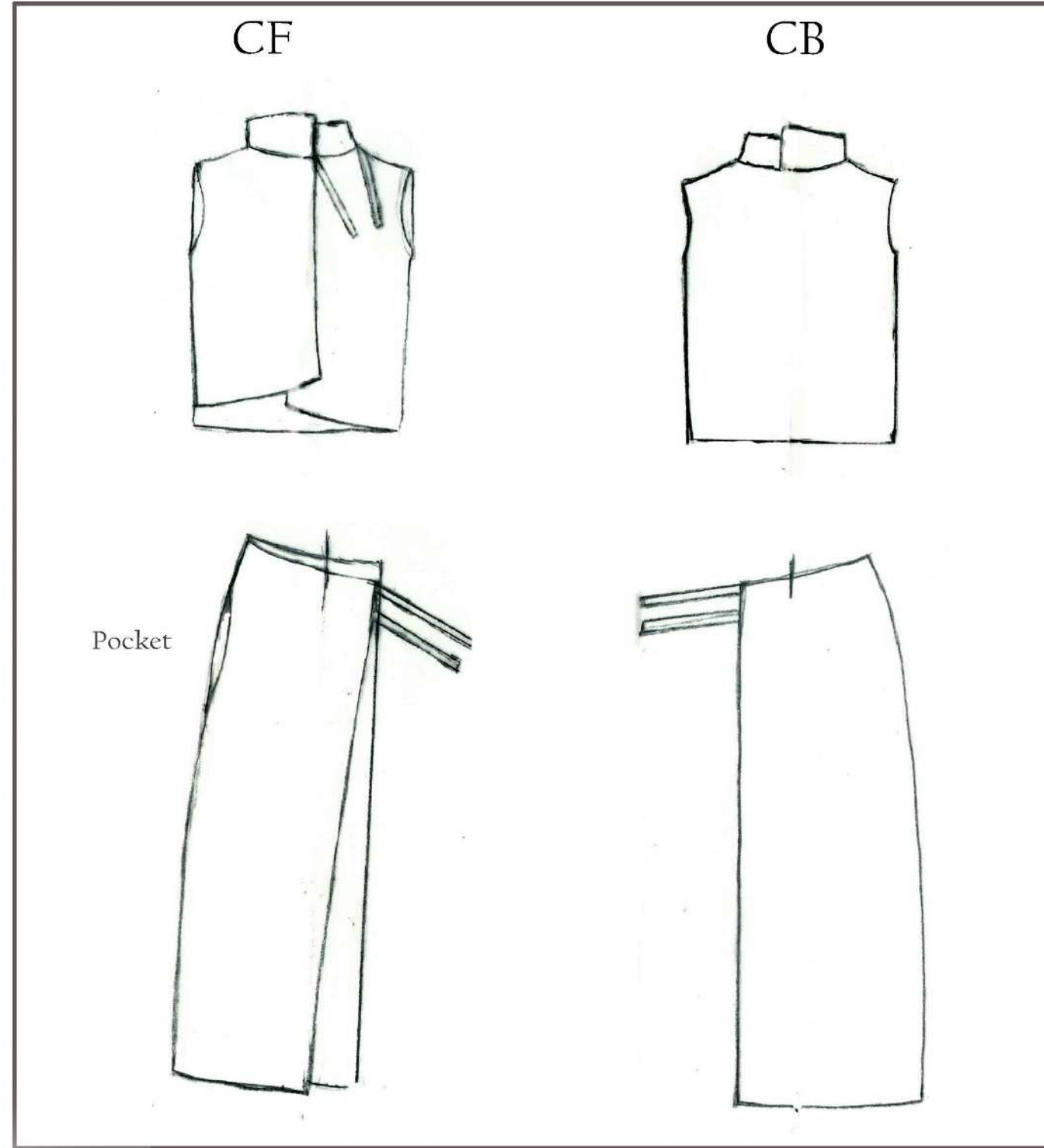
## Care instructions



Style No : 003

Season : S / S' 22

Sheila Grimani



## Materials



PANTONE  
718C

55% CUPRO - 45% VISCOSE



PANTONE  
143C

55% CUPRO - 45% VISCOSE



PANTONE  
425C

100% LINEN

## Description

Two individual parts crossover skirt.  
Cross over tied top.  
Two part yoke. Adhesive fabric inside

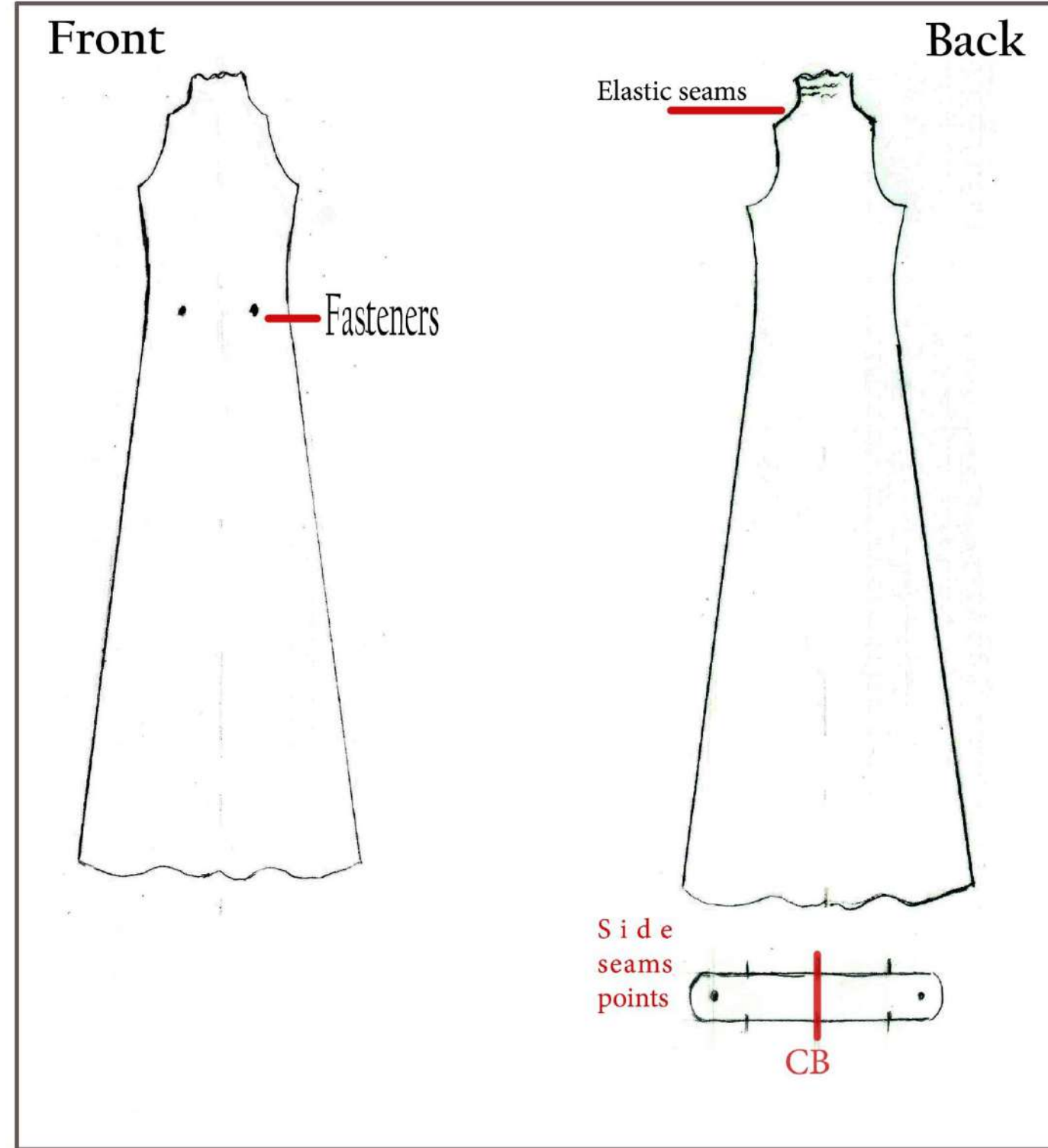
## Care instructions



Style No : 004

Season : S / S' 22

Sheila Grimani

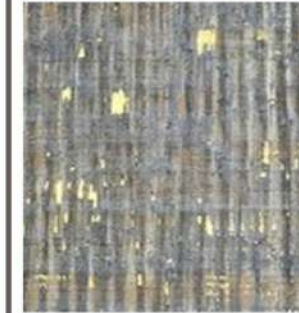


## Materials



PANTONE  
7537C

55% CUPRO - 45% VISCOSE



PRINTED CORK



## Description

Maxi dress, off shoulder (athleisure shoulders).  
High fluffy neck . Elastic seams at back neck to hold neck up and fluffy.  
Adaptable cork belt with metal fasteners.

## Care instructions



Style No : 005

Season : S / S' 22

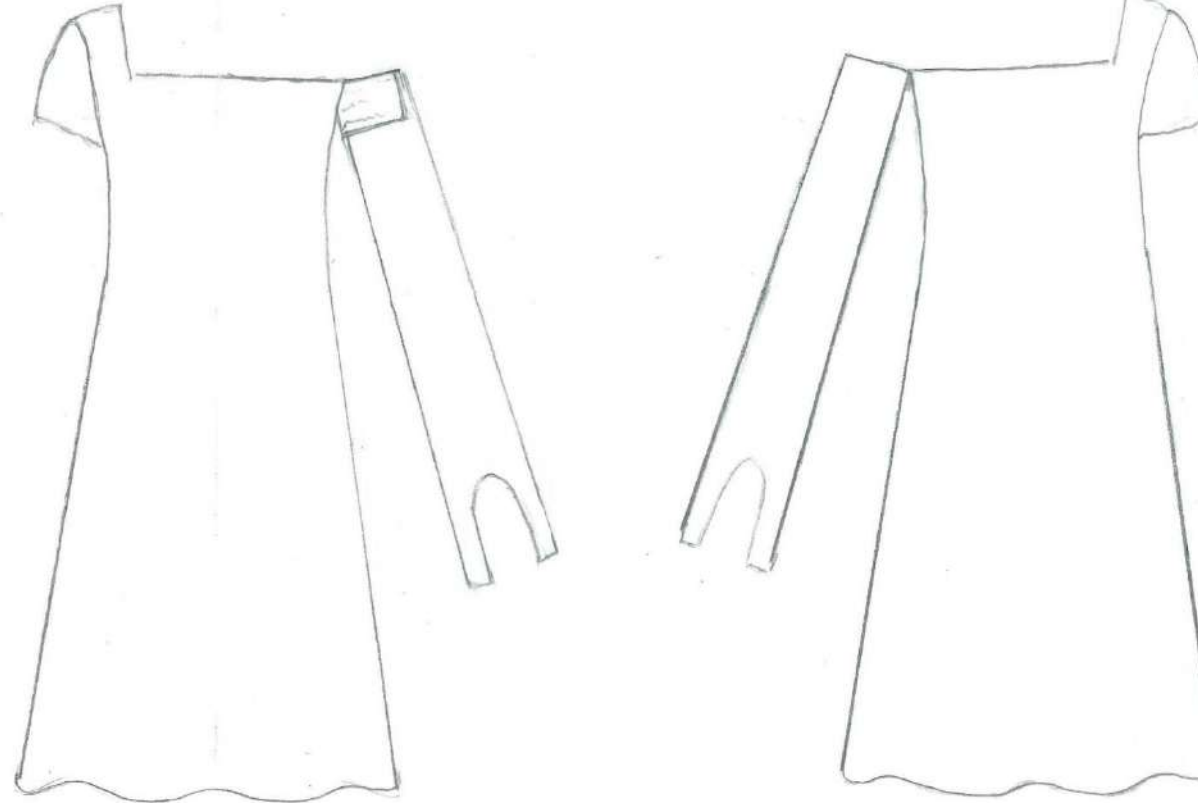
**Sheila Grimani**



Front

Back

Elastic seams



**Materials**



55% CUPRO - 45% VISCOSE

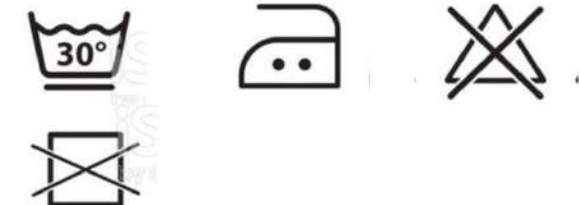


55% CUPRO - 45% VISCOSE

**Description**

Mini hemisphere dress. One short sleeve.  
The other sleeve is an off-shoulder short sleeve with elastic seams.  
On the off shoulder sleeve is sewn a piece of fabric (zic-zac seam all over),  
which can be used as a sleeve or as a scarf.

**Care instructions**



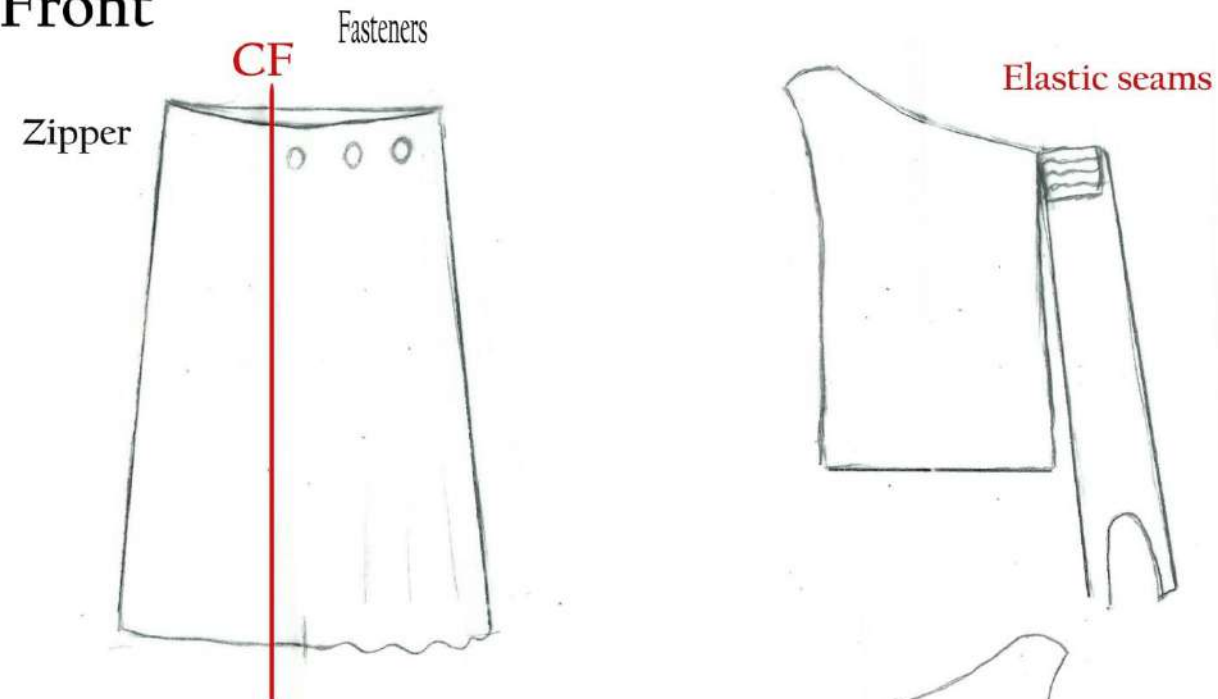
Style No : 006

Season : S / S' 22

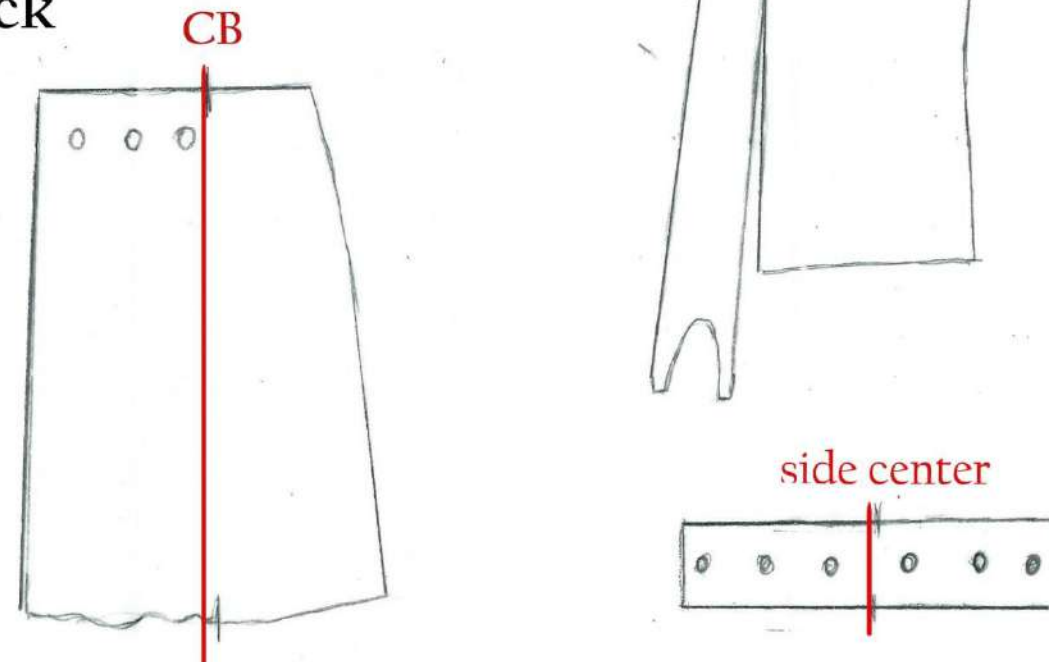
Sheila Grimani



Front



Back



Materials



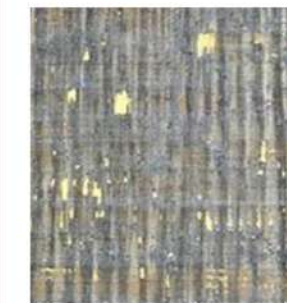
PANTONE  
718C

55% CUPRO-45% VISCOSE



PANTONE  
143C

55% CUPRO-45% VISCOSE



PRINTED CORK



**Description** Top: One side, sleeveless and the other off-shoulder short sleeve with elastic seams.  
On the back of this sleeve a piece of fabric is sewn which can be used as a sleeve or scarf.

Mini skirt with adaptable cork belt adjusted with metallic fasteners.

Care instructions



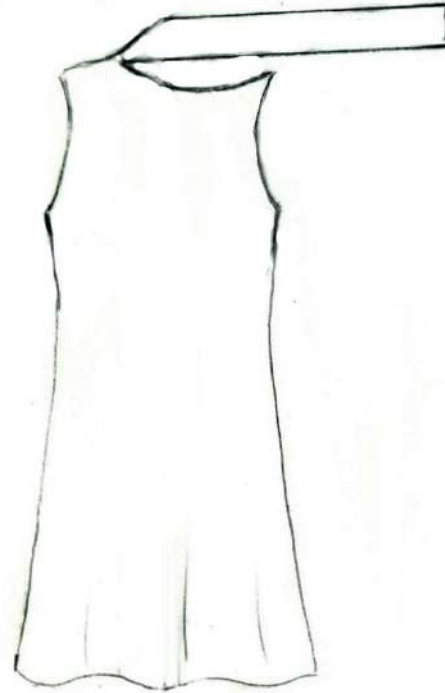
Style No : 007

Season : S / S' 22

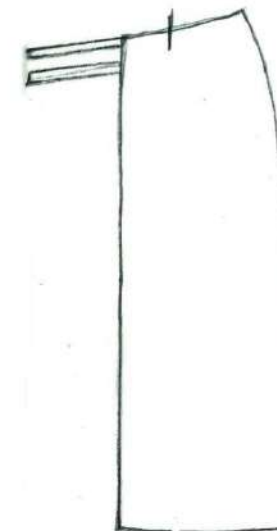
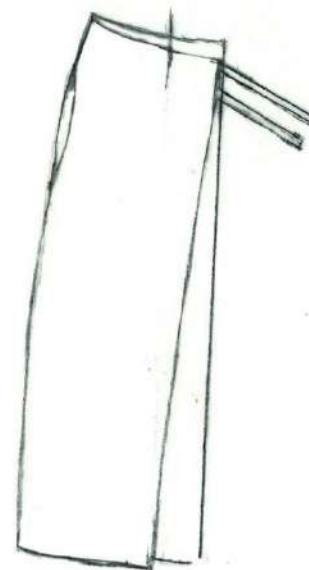
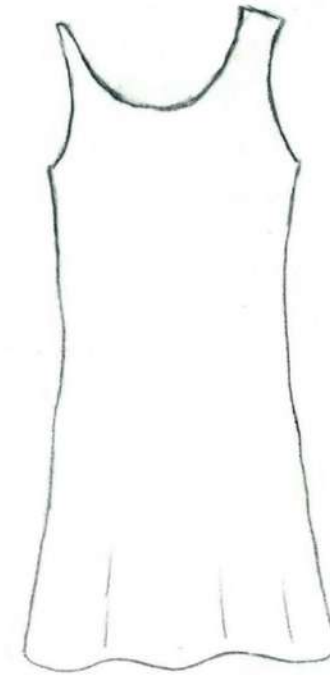
**Sheila Grimani**



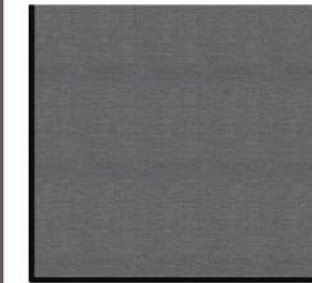
Front



Back



Materials



Care instructions



**Description** Hemisphere mini sleeveless dress with built-in scarf.  
Details for one part skirt on technical No 3

Style No : 008

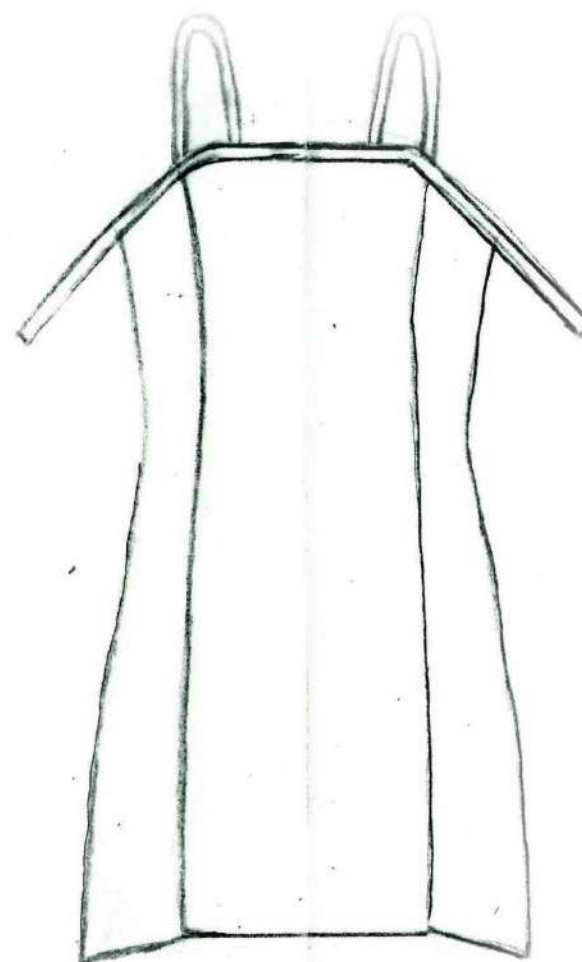
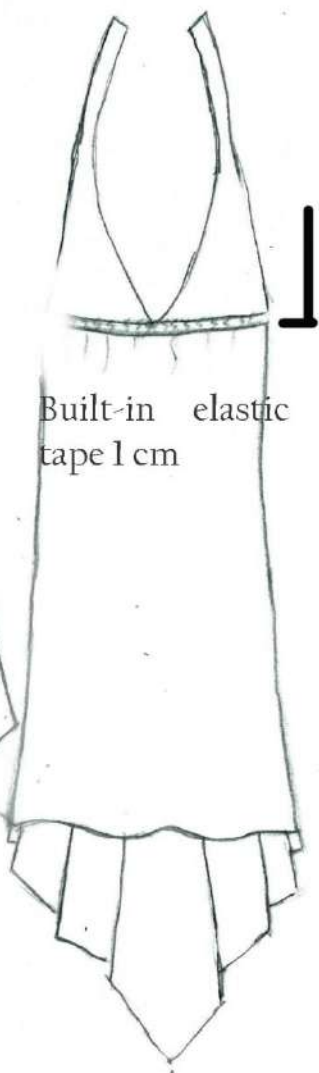
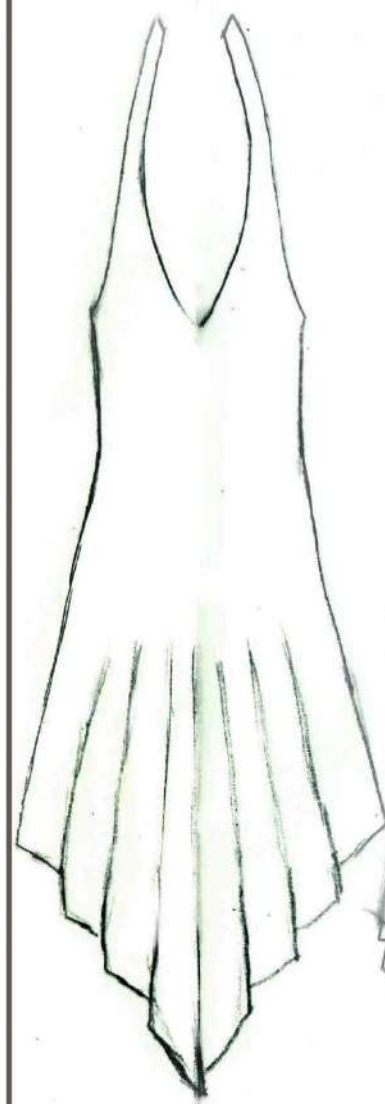
Season : S / S' 22

Sheila Grimani



Front

Back



Side seams

## Materials



PANTONE  
143C

55% CUPRO-45% VISCOSE



PANTONE  
425C

100% LINEN

## Description

## Care instructions



Style No : 009

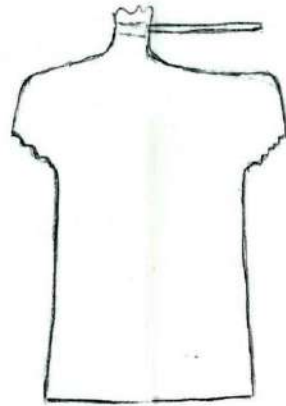
Season : S / S' 22

Sheila Grimani

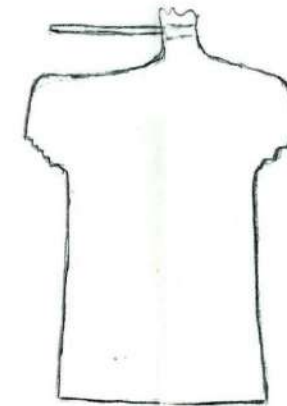


Front

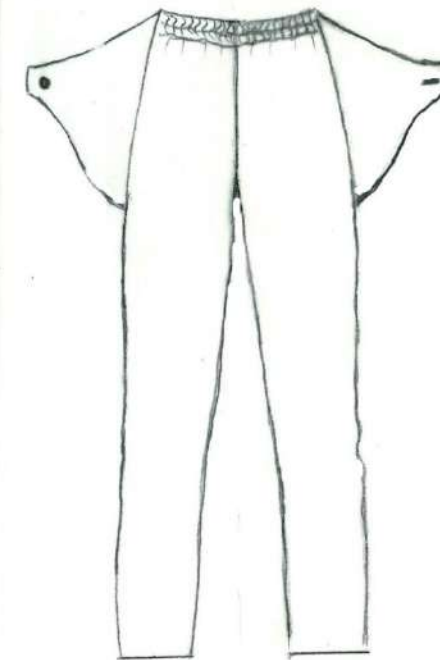
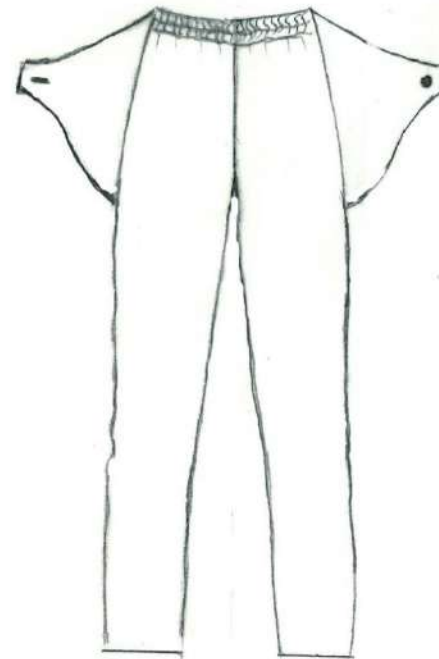
Tunnel and fabric  
cord 0.5 cm



Back



Built-in elas-  
tic tape 4 cm



Materials



PANTONE  
7537C

55% CUPRO-45% VISCOSE



PANTONE  
718C

100%; LINEN



Description

Semi-loose fit trouser. Elastic waist. Cross over parts.  
Loose fit top. Tunnel on high end neck with fabric cord 0.5 cm

Care instructions



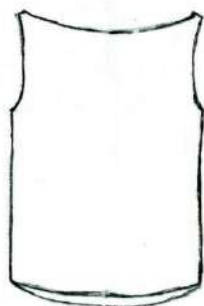
Style No : 010

Season : S / S' 22

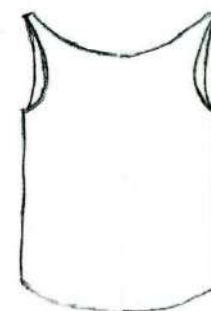
**Sheila Grimani**



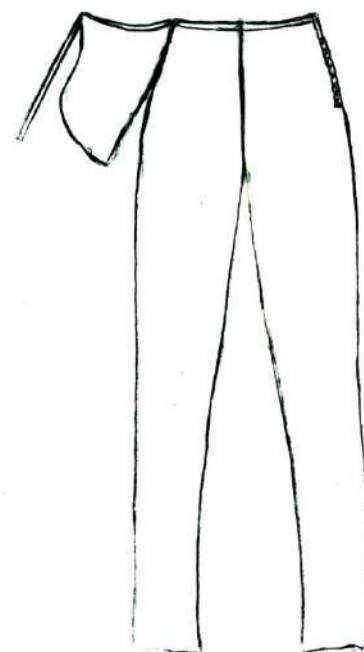
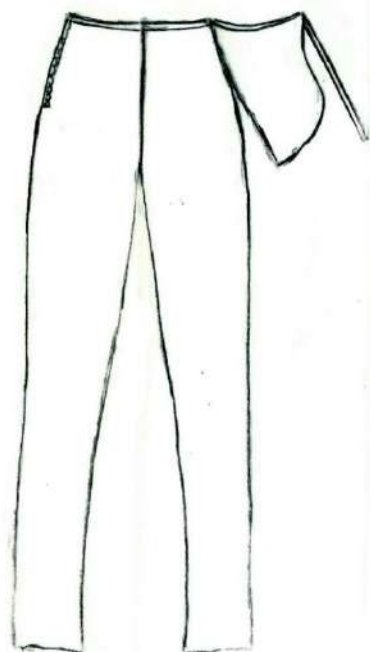
Front



Back



Invisible zipper



## Materials



100%LINEN



55% CUPRO-45% VISOCSE



## Description

Comfort cigarette pant with a big external pocket-bag.  
Invisible side zipper

## Care instructions



# COLOUR CHART

Lost Atlantis

S/S '22



PANTONE  
1205C

Caramel Beige



PANTONE  
143C

Honey Gold



PANTONE  
718C

Tile Red



PANTONE  
7537C

Summer Mild Gray



PANTONE  
425C

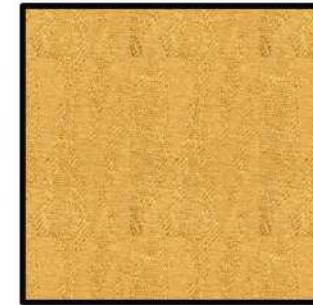
Old time Gray



# FABRIC CHART

Lost Atlantis

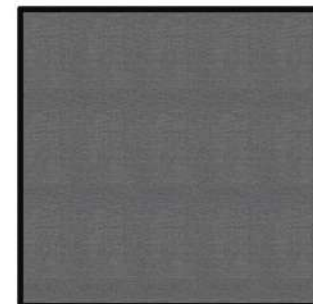
S/S '22



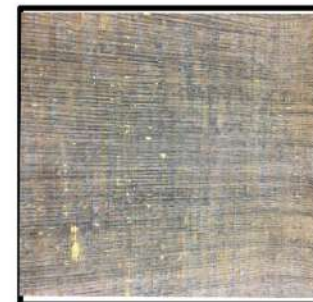
Tencel Lyocell 74% Linen European Flax 16%



Cupro 55% Viscose 45%



Linen 100%  
Master of Linen, European Flax



Cork Printed Portugal Origin

